

PSSu E F PS1-T

314191



Electronic module to supply power (periphery 24 V and system 5 V) buffered, ext. temperature.

Technical details

Certifications:	CE;cULus Listed;EAC (Eurasian);TÜV;KOSHA
Application range:	Standard/failsafe
Power consumption DC:	12.0 W
Supply voltage (V):	24,0
Supply voltage type:	DC
Purpose of supply voltage:	Module Supply
Permitted base modules:	PSSu BS 2/8C-T;PSSu BS 2/8S-T;PSSu BS-R 2/8C-T;PSSu BS-R 2/8S-T
Width dimension:	25.2 mm
Height dimension:	76.0 mm
Depth dimension:	60.2 mm
Gross weight:	69 g
Net weight:	60 g
Ambient temperature:	-40 - 70 °C

Accessories



314654

PSSu BS-R 2/8 S-T



314655

PSSu BS-R 2/8 C-T



314656

PSSu BS 2/8 S-T



314657

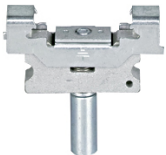
PSSu BS 2/8 C-T

Optional accessories



312900

PSSu A ET (10 pcs.)



312901

PSSu A ETM (2 pcs.)



312949

PSSu A ET PE (10 pcs.)



312958

PSSu A LA0 (10 x 108 pcs.)



312967

PSSu A LA0.1 (10 x 108 pcs.)



314902

PSSu A EC-T
