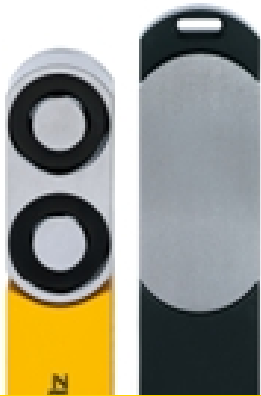


PSEN sl-1.0p 6.1/PSEN sl-1.0fm 1unit

570684



"Safety gate system with magnetic interlock, IP67, 8pin M12 connector (male). 2 safe semiconductor outputs (OSSD); Solenoid power 1000N (process guarding); 4 LEDs; Applications up to SIL3/PL e/Cat4; additional function: Extended diagnostics for serial connection; Content = 1 piece fully coded and free-moving actuator. Teach-in of new actuators up to 8 times."

Technical details

Assured release distance:	15.0 mm
Certifications:	CE;cULus Listed;EAC (Eurasian);TÜV;FCC;IC
Sensor principle:	Transponder
Type of coding:	Fully coded
Holding force:	1000 N
Number of OSSD outputs:	2
Number of inputs:	3
Connection type:	M12, 8pol. male
Supply voltage (V):	24,0
Supply voltage type:	DC
Power consumption DC:	7.2 W
Protection type, housing:	IP67
Housing material:	Anticorodal, hard anodised
Width dimension:	45.0 mm
Height dimension:	172.0 mm
Depth dimension:	44.0 mm
Gross weight:	1770 g
Net weight:	1710 g
Ambient temperature:	-25 - 55 °C

Optional accessories



540319

PSEN cable axial M12 8-pole 3m



540320

PSEN cable axial M12 8-pole 5m



540321

PSEN cable axial M12 8-pole 10m



540322

PSEN cable angle M12 8-pole 3m



540323

PSEN cable angle M12 8-pole 5m



540324

PSEN cable angle M12 8-pole 10m



540325

PSEN cable angle M12 8-pole 30m



540326

PSEN cable axial M12 8-pole 30m



540328

PSEN Y junction M12-M12/M12



570550

PSEN sl bracket swing door



570551

PSEN sl bracket sliding door



540331

PSEN T junction (auxiliary contact) M12



773603

PDP67 F 4 code



540312

PSEN screw M5x20 10pcs



540340

PSEN cable M12-8sf M12-8sm, 2m



540341

PSEN cable M12-8sf M12-8sm, 5m



540343

PSEN cable M12-8sf M12-8sm, 20m



540344

PSEN cable M12-8sf M12-8sm, 30m



540342

PSEN cable M12-8sf M12-8sm, 10m



540333

PSEN cable M12-8sf, 20m